



Skydive Deconfliction

Scott Anderson, Chief Instructor, MGSA

Skydive Deconfliction



- Originally a club email
- Safety Day all about repeat reminders
- KISS building blocks:
- Good listening skills
- Two pieces of temporary airspace
- A standard playbook response to standard King Air transmissions

Active Listening 101



- Turn on radio early in the keyhole
- Balance radio volume / audio vario volume
- Build situational awareness before staging
- Listening is highly underrated with 360 degree coverage
- Listening has much greater range than vision
- Actively filter chatter for important info
- Listening is the key to Skydive deconfliction



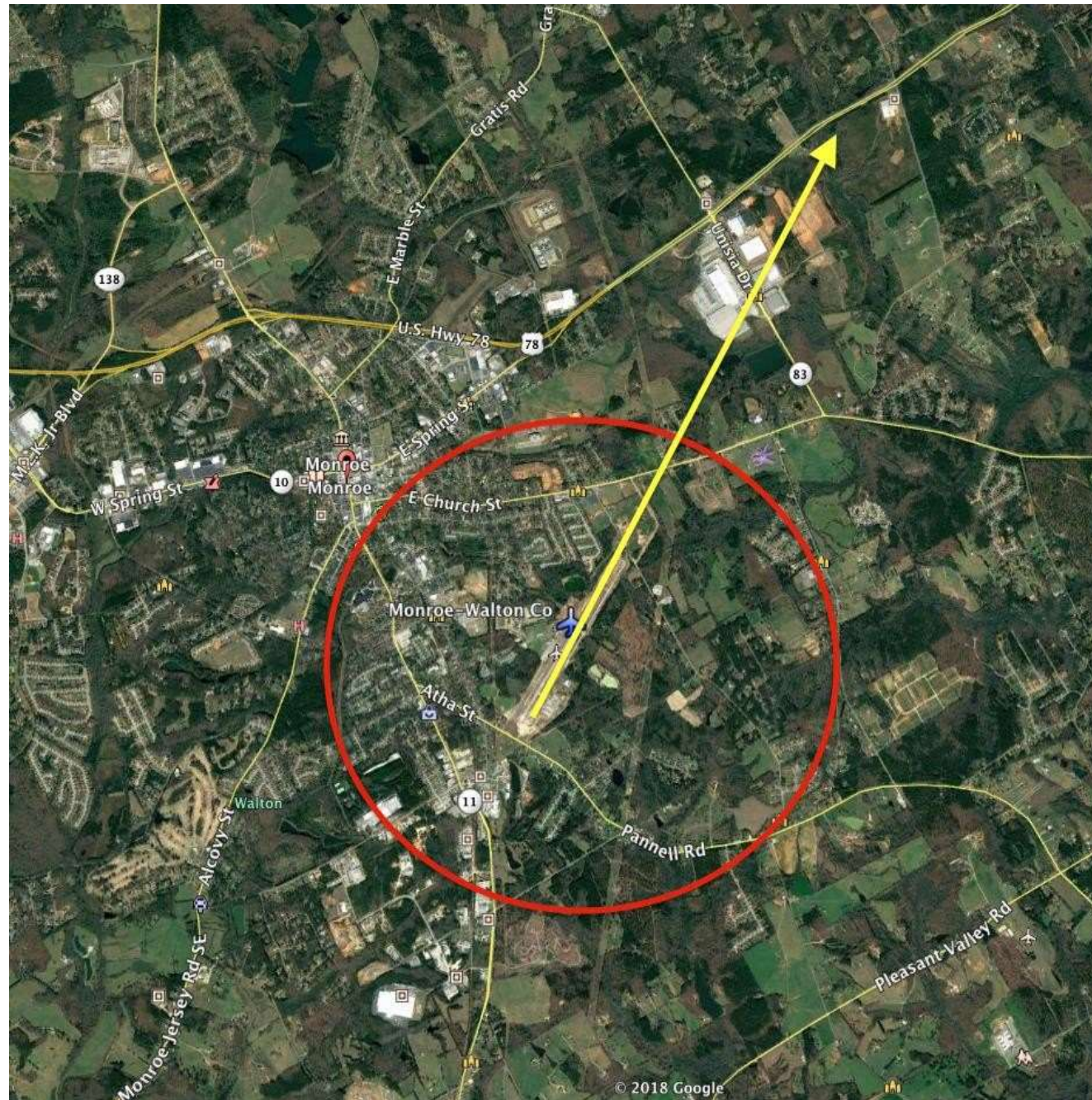
First Piece of Temporary Airspace

- Runway 3 departure corridor
- Runway heading to Hwy 78 (3.5nm)
- Covers all altitudes as King Air climbs very steeply – beware!



Second Piece of Temporary Airspace

- Drop zone with 1 nm radius (Ref office map for landmarks)
- 14,000' and below
- Expect actual release point upwind in this circle
- OD should confirm this with SDM
- This is another reason to come to the field knowing winds aloft (NOAA Aviation Weather Center app / Windy app)



2020-01-22



Scenario 1: King Air Parked on Ramp

- Both temporary airspace areas open for gliders
- No permanently closed airspace!



Scenario 2: King Air “Rolling on the Ramp”

- Keyhole gliders should wait to stage/launch after King Air launches
- Staged towplane/glider can launch after confirming King Air holds short/clear of runway at midfield
- Instructors planning a PT3, launch after King Air/other GA takeoffs
- Airborne gliders quickly vacate departure corridor temp airspace
- Drop zone 1 nm radius temp airspace still open for gliders except

departure corridor portion



Scenario 3: King Air “Departing Rwy 3”

- Airborne gliders are now out of departure corridor temp airspace
- Drop zone temp airspace still available for gliders except departure corridor portion



Scenario 4: “Two Minutes Until Jumpers Away”

- All except landing gliders quickly exit drop zone 1 nm radius temp airspace *in the shortest direction*
- Gliders needing to land continue with standard pattern
- Departure corridor outside 1 nm radius is reopened to gliders



Scenario 5: “Jumpers Away”

- Gliders not needing to land have all vacated 1 nm radius DZ airspace
- Gliders in the pattern fly a safe pattern
- When ALL jumpers are safely below pattern altitude, 1 nm radius DZ temp airspace is reopened to all gliders



Summary

- Good listening skills have many uses in aviation
- Good listening skills are critical to Skydive deconfliction
- Standard King Air calls trigger simple glider playbook responses
- Two temp airspaces (departure corridor and 1 nm radius DZ) open and close for gliders multiple times during the day
- Most importantly, NEVER SACRIFICE A SAFE PATTERN WHEN YOU NEED TO LAND